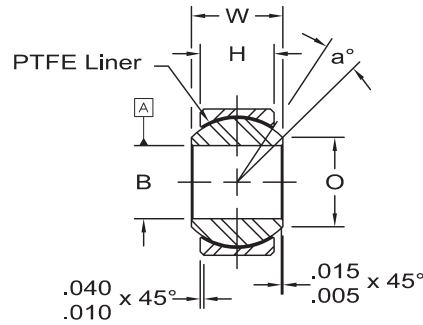
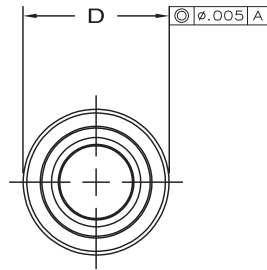


# AWC-T & AWC-TG SPHERICAL BEARINGS

Wide - SAE Series AS14102 (Plain)



**Race** - 17-4 PH stainless steel (AMS 5643), heat treated.

**Ball** - 440C stainless steel (AMS 5630), heat treated.

**Liner** - AT 3200 bearing liner, permanently bonded to race I.D., qualified to SAE-AS81820 Type A

www.aurorabearing.com • Fax 630-859-0971

a° Misalign. Angle Ref.	STATIC LIMIT LOAD		Oscillating Load Lbs.	STANDARD FIT		"K" FIT		Approx. Brg. Wt. Lbs.	SAE NO.		AURORA NO.	
	Radial Lbs.	Axial Lbs.		No Load Rotational Breakway Torque Max. In Lbs.	No Load Rotational Breakway Torque Max. In Lbs.	Radial Clearance Max.	Axial Clearance Max.		GROOVED	PLAIN	GROOVED	PLAIN
15	2,500	1,770	4,900	.25-5.0	0.5	.0007	.0021	.031	MS14103-3	MS14102-3	AWC-3TG	AWC-3T
15	5,500	1,770	4,900	.25-5.0	0.5	.0007	.0021	.031	MS14103-4	MS14102-4	AWC-4TG	AWC-4T
14	9,400	1,640	6,050	.25-8.0	1.0	.0007	.0021	.035	MS14103-5	MS14102-5	AWC-5TG	AWC-5T
8	13,700	2,630	8,310	.25-8.0	1.0	.0007	.0021	.060	MS14103-6	MS14102-6	AWC-6TG	AWC-6T
10	20,700	3,650	11,750	.25-8.0	1.0	.0007	.0021	.080	MS14103-7	MS14102-7	AWC-7TG	AWC-7T
10	19,700	3,650	11,750	.25-8.0	1.0	.0007	.0021	.080	MS14103-7A	-	AWC-7TGA	-
9	21,400	4,970	14,950	.25-8.0	1.0	.0007	.0021	.100	MS14103-8	MS14102-8	AWC-8TG	AWC-8T
10	26,600	5,370	18,100	.25-8.0	1.0	.0007	.0021	.135	MS14103-9	MS14102-9	AWC-9TG	AWC-9T
12	29,000	6,130	20,250	.25-8.0	1.0	.0007	.0021	.160	MS14103-10	MS14102-10	AWC-10TG	AWC-10T
13	37,000	7,730	26,200	.25-8.0	1.0	.0007	.0021	.240	MS14103-12	MS14102-12	AWC-12TG	AWC-12T
6	65,200	10,800	33,600	.25-12.0	2.0	.0010	.0030	.350	MS14103-14	MS14102-14	AWC-14TG	AWC-14T
12	104,000	19,300	56,250	.25-12.0	2.0	.0010	.0030	.970	MS14103-16	MS14102-16	AWC-16TG	AWC-16T

